

Support Bulletin



Subject	Distribution of print drivers and settings in a cross platform architecture
Model	Server 2008 (R2) (64 bit) 1. Client Windows XP (32 bit) 2. Client Vista / Windows 7 (32 bit)

Topic

How to distribute print drivers and print driver settings in a cross platform architecture?

This example shows how to install a 32 bit print driver on a Server 2008 R2 for sharing. Afterwards the description shows how to distribute print driver settings to the 32 bit clients.

Connect a Windows XP client to Server 2008 R2

Needs

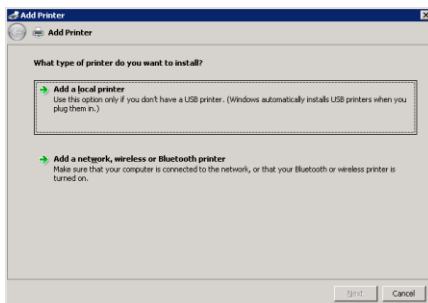
Server 2008 (R2) (64 bit)

Client Windows XP (32 bit)

Example: Kyocera *Classic* Universaldriver

Description

Server 2008 R2

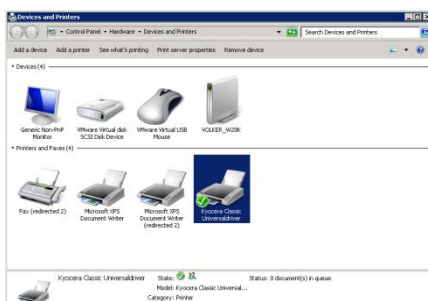


Start 'Devices and Printers' and add the print driver of your choice using the 'Add Printer' wizard.

Use 'Add a local printer' to install the specific print driver. In our example; Kyocera *Classic* Universaldriver.

Share this print driver using a unique share name. In our example; Kyocera *Classic* Universaldriver.

It is not necessary to set the print driver as default.



Now your printer should be installed on your Server 2008 R2. The print driver can be shared to 64 Bit clients (Windows XP and 7).

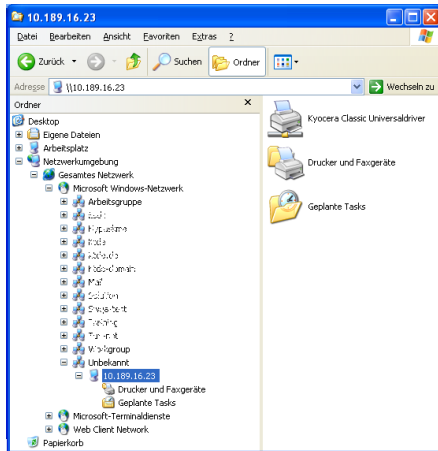
Next we must install a 32 bit print driver for sharing driver and settings.

Now you must move to a 32 bit client (Windows XP and 7) which is connected to the Server 2008 R2.

Support Bulletin



Client Windows XP



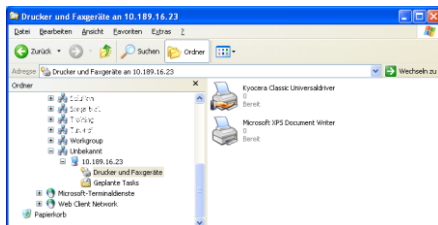
Open Windows – Explorer.

Type in the address of your Server 2008,
e.g. [\\Servername](#) or [\\ServerIP](#)
and connect to your Server 2008.

The new Window should show your shared print drivers, 'Printer and Faxes', and 'Planned Tasks'.

In our example we have connected a German Windows XP client to an English Server 2008 R2.

Double click on 'Printer and Faxes'.



Right click on the icon of the shared print driver you want to add a 32 bit share.

In the pop-down menu choose 'Properties'.

A Window 'Printer properties' with a warning message will open.

Click 'Yes'.

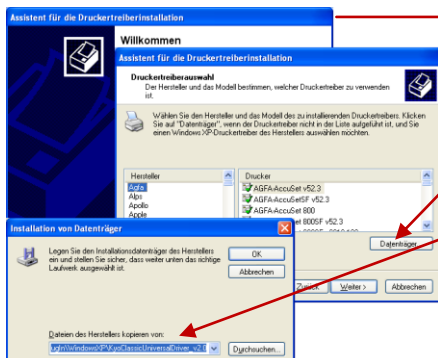
The welcome screen of the 'Add Printer Wizard' will be shown.

Click 'Next >'. The 'Install Printer Software' will be shown.

Click 'Have disk...'. The Window 'Install from disk' will be open.

Click 'Browse...' and serve to the location where the **Windows XP** - version of your Kyocera Classic Universaldriver is located.

Click 'OK'.



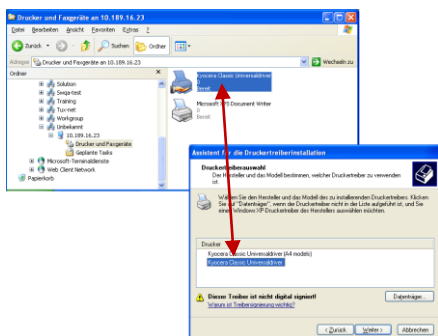
In the selection of printer choose the proper print driver which matches your installed driver on the Server 2008.

Click 'Next >'.

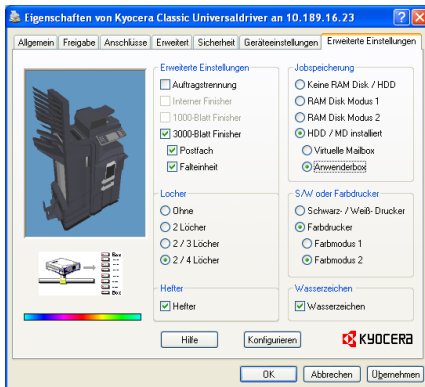
The wizard Window 'Completing the Add Printer Wizard' will be shown.

Click 'Finish'.

If the driver is not signed a warning message will appear. In this case click 'Continue Anyway'.



Support Bulletin

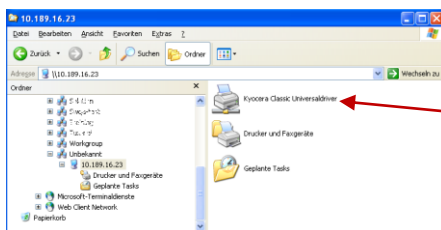


After copying all necessary files the window 'Properties of Kyocera Classic Universaldriver on IPAddress' will be open.

Choose the tabs 'Device Settings' and 'Extended Settings' to set up your print driver.

After you did your settings click 'OK' to close the window and activate your settings.

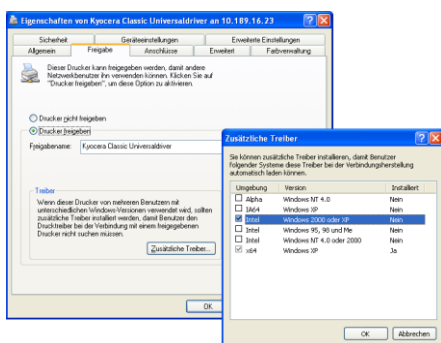
We have finished the first part. Now we must deposit the 32 bit print driver on the Server 2008 R2 for sharing.



Open your Windows Explorer again and open your Server 2008 R2.

Double click on the shared printer icon of the 'Kyocera Classic Universaldriver'.

A Window 'Properties of Kyocera Classic Universaldriver on IPAddress' will open.



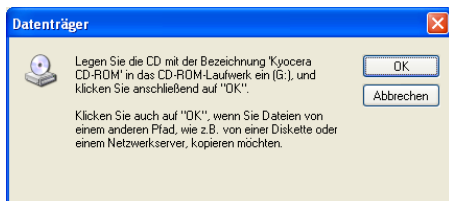
Choose the tab 'Sharing'.

Click 'Additional Drivers...'

In 'Environment' choose 'Windows 2000 and XP'.

Click 'OK'.

If the driver is not signed a warning message will appear. In this case click 'Continue Anyway'.



A message will be shown to insert a CD.

Click 'OK'

The Message will ask you for the location of the driver files.

Click 'Browse' and move to location of the **Windows 7** – print driver.

Click 'OK'.

The print driver is installed on your Server 2008 R2 successfully in the version of 64 bit and 32 bit. Now the driver can be shared to 32 bit XP clients and 32 / 64 bit Windows 7 clients. Also the settings will be shared to the clients.

Attention this manual is valid only for identical Windows XP / 7 (2008 R2); 32 / 64 bit print driver packages!

Support Bulletin



Connect a Windows Vista / 7 (32 bit) client to Server 2008 R2

Needs

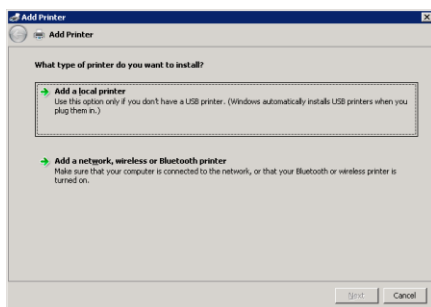
Server 2008 (R2) (64 bit)

Client Vista / Windows 7 (32 bit)

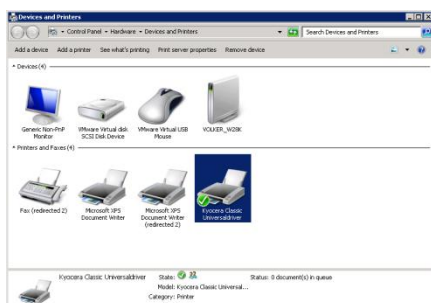
Example: Kyocera *Classic* Universaldriver

Description

Server 2008 R2



Start 'Devices and Printers' and add the print driver of your choice using the 'Add Printer' wizard. Use 'Add a local printer' to install the specific print driver. In our example; Kyocera *Classic* Universaldriver. Share this print driver using an unique share name. In our example; Kyocera *Classic* Universaldriver. It is not necessary to set the print driver as default.

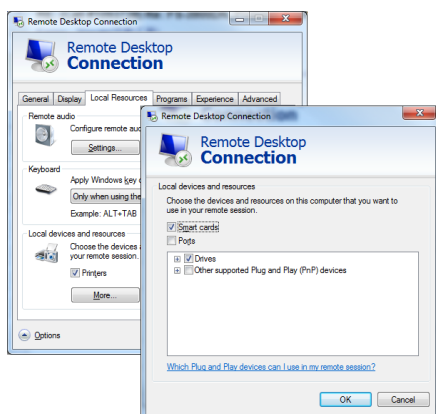


Now your printer should be installed on your Server 2008 R2. The print driver can be shared to 64 bit clients (Windows XP and 7).

Next we must install a 32 bit print driver for sharing driver and settings.

Now you must move to a 32 bit client (Windows XP and 7) which is connected to the Server 2008 R2.

Client Windows



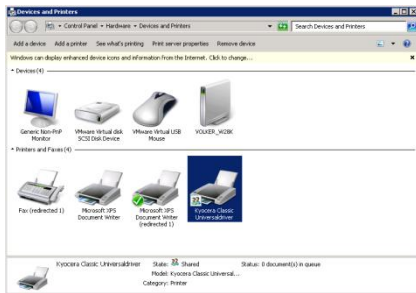
Open a remote connection to your Server 2008 R2 with administrator rights using your Windows 7 client PC.

Under the tab 'Local Resources' click 'More...' for adding local 'Drives'. Click 'OK' and 'Connect'.

In the window 'Window Security' select an user with administrator rights and type-in the password. Click 'OK'.

All further steps will be done in the remote connection.

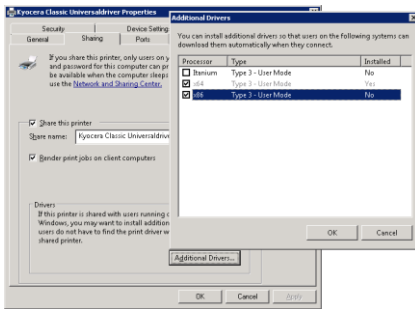
Support Bulletin



Open 'Devices and Printers'.

Select the print driver you want to add a 32 bit print driver for sharing.

Right click on the printer icon and select 'Printer properties'.

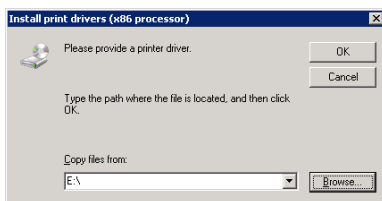


In the new Window select the tab 'Sharing'.

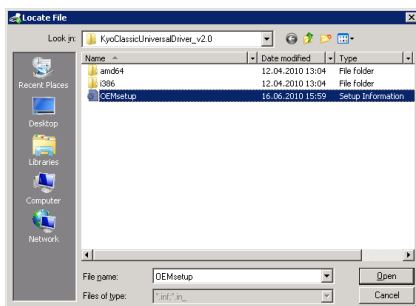
Click the button 'Additional Drivers...'.

Select the processor type 'x86 Type 3 – User Mode'.

Click 'OK'.



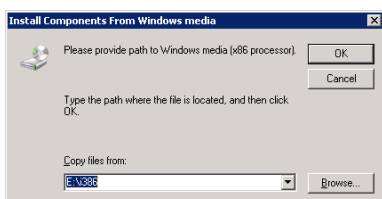
In the new Window 'Install print drivers (x86 processor)' click 'Browse...' to move to the location where the x86 print driver files are located.



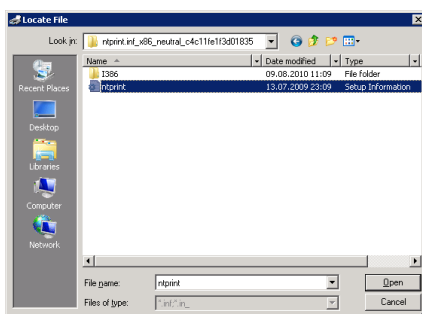
Move to the location where the x86 print driver files are located.

Select 'oemsetup' and click 'Open' to close the window.

Click 'OK' to start copying the print driver files.



In the new Window 'Install Components From Windows media' click 'Browse...' to move to the location where the necessary system files are located.



Move to following location:

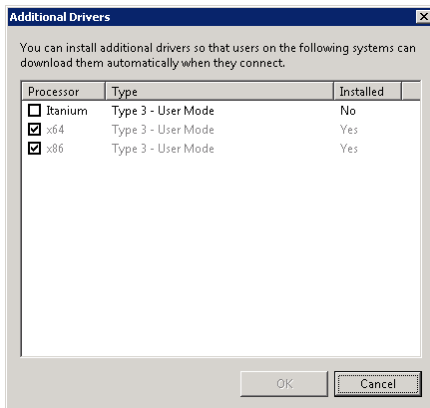
Drive://Windows/System32//DriverStore//FileRepository//ntprint.inf_x86_neutral_....

Select 'ntprint' and click 'Open' to close the window.

Click 'OK' to start copying the system files.

Attention: If you now get an Error-Message with the Error-Code 0x00000057 you have a rights problem somewhere in the communication between Server and Client.

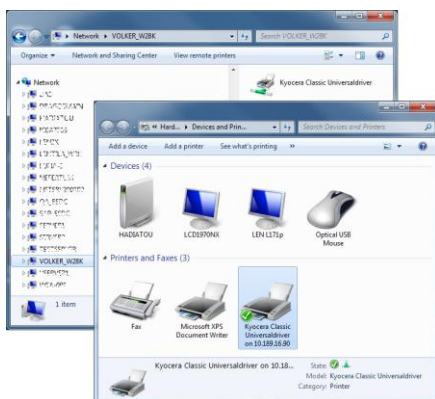
Support Bulletin



Now you have successfully installed your 32 bit print driver for sharing.

Click 'Cancel' for quit.

Set-up 'Printer properties' now.



Now you can move to your Windows 7 (32 bit) client, browse to your Server 2008 R2, and get the shared print driver incl. all settings.

Attention

There are some limitations using Server 2008R2.

Settings: Pushing settings to clients will be done only at installation time. Changing settings afterwards will not take effect on client side.

Workaround: **1.** Change the user rights temporary to administrator rights. The new settings will be pushed to the client if the new right settings take effect.
2. Use 'rundll32 printui.dll,PrintUIEntry' in a login script for distributing new settings.

Renaming: During installation time the print drivers on server side and client side must **NOT** be renamed.